

PerfectPipe Instructions

**Thank You for purchasing
The Patented PerfectPipe®
with a Filter**

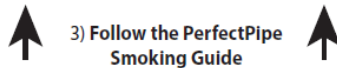
**No Cough No Burn
& Reduce Herb Usage**

Safeguard your health & enjoy
the best smoking experience.

**Caution: Inspect your PerfectPipe
prior to use. If pipe has any
damage or cracks, do not use.
Dispose of properly.**

- 1) Insert New Filter into PerfectPipe.
Insure that Screen is in Bowl.
- 2) Push Bowl end of pipe into
Ground Herb with a twisting action.
Pack firm with finger or Tool.

(1)



**3) Follow the PerfectPipe
Smoking Guide**
Pics & Video @ ThePerfectPipe.com

Changing the Filter
Push threaded end of tool part way
into used filter, twist clockwise until
filter begins to spin, Remove used
filter & dispose of properly.

If you lose your tool, you can use
metal tweezers or a drywall screw.

Stainless Steel Screen
You do not need to change the
stainless steel screen until it becomes
clogged (which may occur between
20 and 40 bowls of use).

Tip: Have rubbing alcohol and paper
towels handy to clean tool etc.

(2)

Removing Stainless Steel Screen

Remove filter. Insert blunt end
of Tool through Filter End of pipe
and push out screen. Pick out screen
with threaded tip if necessary.

**When SS Screen needs replacing, it is
recommended to clean your PerfectPipe
at that time to eliminate health risks
associated with mold and bacteria.**
(see Cleaning The PerfectPipe)

Inserting new Stainless Steel Screen

1) Fold new screen slightly like a taco,
screen will fit snug when inserted into bowl.
Leave a little bit of screen sticking out of bowl.

Pics & Video @ ThePerfectPipe.com

(3)

2) Hold pipe with bowl pointing upward.
Hold tool sideways, blunt end touching
outside/bottom of taco shaped screen.

3) Gently start pushing upper portion of
screen, keeping tool against same
location on screen as it rotates
and continue pushing to bottom of Bowl.

Screen will pop into place
and will not fall out.

The screen plays a very important roll
and must always be used.

Note: Screen installation is very easy
when you locate the bottom of bend/taco.

Be sure to check out the Pics &
Video at www.ThePerfectPipe.com

(4)

Cleaning the PerfectPipe®

- 1) Remove filter and screen. Place
Pipe(s) in Cleaning Tube.
Add Rubbing Alcohol until
pipe is covered. Soak from
2 to 24 hours.
- 2) Remove pipe(s). Rinse
Pipe and Brush in warm water!
- 3) Apply a little liquid soap to
tip of brush. Clean inside
of pipe from either end.
- 4) Any residue remaining on bowl
(caused by flame) can easily
be removed with a non scratch
pad and a little liquid soap
**If pipe is not completely clean,
repeat steps 1 through 4.**
- 5) Rinse well with warm water
and allow pipe to dry.

You can store & reuse the rubbing
alcohol over and over.
Reverse lid for a better seal.

(5)

Caution: Alcohol is Flammable!
Keep away from flames!

No Smoking!

**Prepare a well ventilated area
before starting and use gloves!**

You must be at least 21 yrs or
older to purchase and use the
PerfectPipe. The PerfectPipe is
for legal use only. Users agree
to assume all risks associated
with smoking and use of
glass smoking devices.

The PerfectPipe uses the highest
Quality Cellulose Acetate Filters
Available Worldwide. Be sure
to have plenty of filters on
hand at all times.

Contact us @
sales@thepipe.com

(6)

PerfectPipe Smoking Guide Smoke Smart

- 1) Light Like a Cigar and Remove Flame.
Fire Kills THC/CBD/CBN etc!
 - 2) Remove Flame
Draw Slowly - 4 to 6 Hits per bowl
Keep The Red Temp Low
 - 3) Relight as necessary.
Gently repack with Tool or stick &
Flash with Flame.
- Use a New Filter with each Bowl!
Use Ground up Herb

**Caution: Be careful not to apply
excessive force to the glass while
loading. The PerfectPipe is
extremely durable, yet glass
can be broken with impact
or excessive force.**

Made in USA

THE PerfectPipe.COM
Healthy Clean Efficient

SAFETY INSTRUCTIONS

Please read all instructions

Distributed by R&D Innovations LLC

ThePerfectPipe.com

CleverSmokes.com